

## **DELTA-50**

Desktop PA with Bluetooth®

Item ref: 178.808UK

User Manual



Version 1.



**Caution: Please read this manual carefully before operating**  
**Damage caused by misuse is not covered by the warranty**

## Introduction

Thank you for choosing the DELTA-50 desktop PA unit. Please read this manual prior to use to avoid damage to the item.

This versatile portable PA unit is packed with features in a compact, manageable enclosure and is suitable for a wide array of applications ranging from public address for presentations to outdoor karaoke.

- Mains or DC operation
- Internal 12V rechargeable battery
- 2 x VHF handheld microphones included
- Guitar / Microphone inputs (6.3mm jack)
- Master 2 band EQ and Echo effect for microphones
- Internal USB/SD/FM media player with Bluetooth
- Wireless remote control for media player
- Carry handle & Shoulder strap

## Package Contents

Please check the contents to ensure that the product has been received in good condition.

- DELTA-50 desktop PA unit
- 2 x VHF handheld microphone transmitters
- IR Remote control for media player
- Shoulder strap
- Fig.8 mains lead
- User manual

If you find any accessory is missing or the product has arrived with any problems, please contact your retailer at once.

This product contains no user-serviceable parts so make no attempt to try to fix or modify this item yourself as this will invalidate the warranty. We recommend you keep the original package and proof of purchase for any possible replacement or returned demand.

## Warning

To prevent the risk of fire or electric shock, do not expose this appliance to rain or moisture. To prevent electric shock do not remove the cover. No user serviceable parts inside. Refer servicing to qualified service personnel.

## Safety

Prior to connecting mains, ensure that the supply voltage is correct and the mains lead is in good condition. Avoid ingress of water or particles into the enclosure.

If the VHF microphones are to be unused for a long period of time, remove the battery and store for later use.

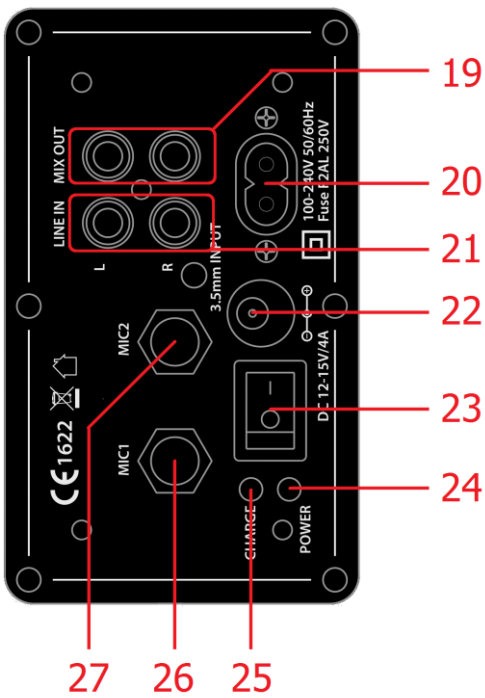
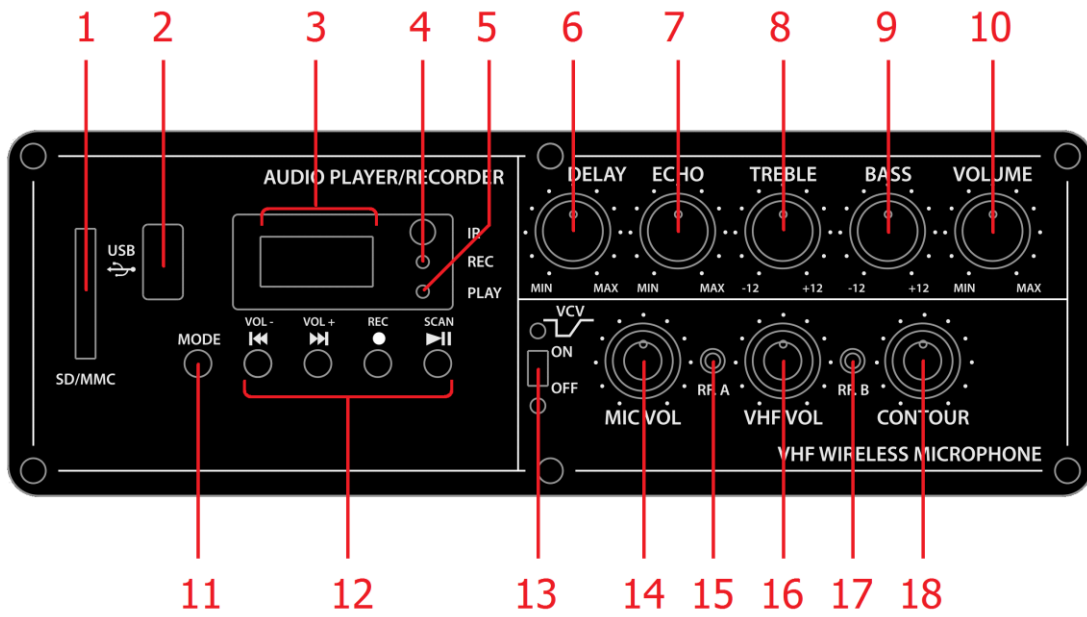
## Placement

Keep the unit out of direct sunlight and away from heat sources.  
Place the unit in an upright position during use and storage.  
Keep the unit away from moisture or dusty environments.

## Cleaning

Use a soft cloth with a neutral detergent to clean the cabinet, panel and controls.  
To avoid damage, do not use solvents to clean this equipment.

## Controls



- 1) SD card slot
- 2) USB input
- 3) Media player LCD display
- 4) Record indicator
- 5) Play indicator
- 6) Delay time control of echo effect
- 7) Microphone Echo level control
- 8) Treble EQ control
- 9) Bass EQ control
- 10) Music volume control
- 11) Media player mode control
- 12) Media player transport/record controls
- 13) VCV activation switch
- 14) Wired microphones volume control
- 15) Radio Frequency indicator (channel A)
- 16) Wireless microphones volume control
- 17) Radio Frequency indicator (channel B)
- 18) Microphone EQ contour control
- 19) Mix line output (RCA)
- 20) Fig.8 mains inlet
- 21) Auxiliary line input (RCA)
- 22) 12Vdc power input
- 23) Power switch
- 24) Power indicator
- 25) Charging indicator
- 26) MIC 1/guitar input (6.3mm jack)
- 27) MIC 2 input (6.3mm jack)

## Operation

### Connection

Your new DELTA-50 desktop PA unit may arrive with you with the internal battery charged. Before connecting the 12Vdc adaptor to the mains, switch the unit on and see if the power LED lights. If not, you will need to charge the battery before using away from a mains supply (see **"Charging the battery"** below)

Connect the QR-series portable PA unit to the mains using the fig.8 lead supplied or to a car 12Vdc outlet with the supplied cigar lighter lead. You may otherwise opt to use the internal battery if charged.

### Power Up

Turn VOLUME, ECHO and MIC VOLUME controls down (anti-clockwise) and turn the POWER switch on (the power LED should light). BASS and TREBLE controls should remain pointing vertically (12-o-clock position) – these can be altered later to give the overall appropriate tone shape. Your DELTA-50 desktop PA unit should now be ready to operate.

### VHF Handheld Microphones

Insert the supplied 9V batteries into the handheld microphones by carefully unscrewing the base of each and connecting the "+" and "-" terminals of the battery to the corresponding clips inside the mic body. Take care to observe the correct polarity when installing the batteries.

With the VHF VOL control turned down, press the VHF ON/OFF button on the DELTA-50 so that the VHF POWER LED lights.

Switch on each wireless mic in turn – the RF LEDs on the DELTA-50 unit should light as a result. If the LED on the handset does not light or stays on dimly lit, change the battery

Gradually increase VHF VOL control, testing each microphone in turn for output through the speaker. Take care not to incur "feedback" (howling or screeching sound through the speaker) by keeping the microphone a sensible distance from the speaker and pointing away from the speaker so that it doesn't "hear" the speaker output.

Turning the ECHO control clockwise introduces the echo effect for singing and special effects. A DELAY rotary control changes the delay time of this echo effect.

The CONTOUR control varies the overall EQ shape of all the microphones. Rotating this control alters the microphones' tone from mid-focused to bass + treble enhanced.

When not in use, switch the wireless microphones off. Remove batteries if not being used for long periods of time.

### External Inputs

In addition to the unit's own VHF microphones, 6.3mm jack inputs are provided to connect external microphones, which are both governed by the MIC VOLUME control.

Mic 1 input can also serve as an input for an electric or electro-acoustic guitar.

A VCV switch activates the Voice Controlled Volume feature.

This function gives priority to microphones over playback, so that announcements are more easily heard. When the VCV is on, any sound through the microphones will cause the music playback to "duck" (drop in volume). The music volume is restored after there is no sound through the microphone (after a short, preset period of time).

Also, an AUX twin RCA input is provided for line input sources such as CD player or personal audio player.

To use these inputs, select the AUX input mode using the media player MODE button.

The AUX input is governed by the VOLUME control at the top of the panel and volume settings in the media player.

Adjacent to this twin RCA input is a twin RCA line output carrying the overall main mix.

This can be used to connect onto other sound systems or for external recording.

## Internal USB/SD player & Bluetooth receiver

The DELTA-50 onboard media player can play back files from USB/SD/FM media or a paired Bluetooth device. Insert a USB memory stick or an SD card with compressed digital audio files stored on it into the relevant slot on the top panel. Playback will normally start automatically from the last media inserted (USB or SD).

If the LCD display shows a jack plug, press the USB/SD button and check that the LCD display shows that media is being read from the USB or SD device. If not, press the ►|| button or try removing and re-inserting the memory device.

Increasing the Master Volume control (21) should result in the audio being played through the speakers. Panel controls are detailed below...



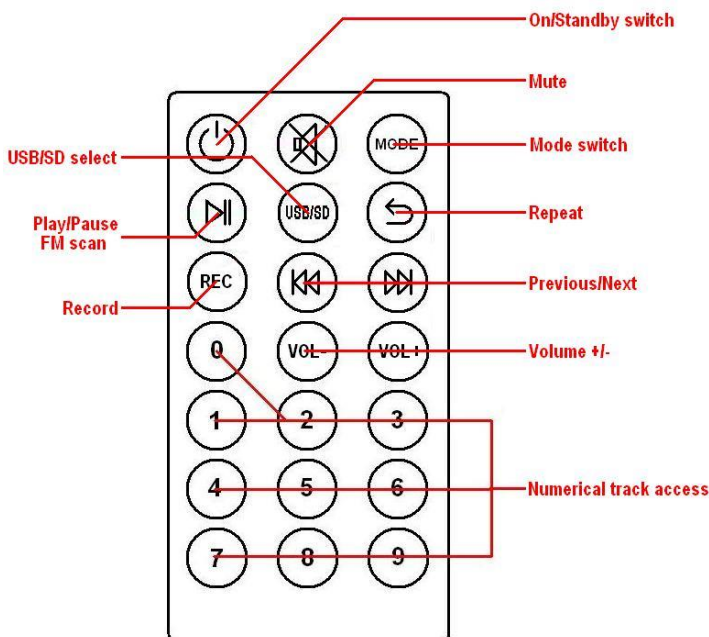
<b>MODE</b>	switches input between USB/SD/FM media or Bluetooth
◀◀	press for previous track
▶▶	press for next track
↺	Repeat mode
▶	Play/Pause playback

To connect a smart phone or other Bluetooth device to the DELTA-50 media player, open the Bluetooth menu on your device and search for "PA SYSTEM". Pair with this ID and connect (re-name if desired) in order to be able to play audio from the Bluetooth device to the DELTA-50.

Pressing the MODE button will select between Bluetooth and USB/SD playback sources.

(Note: there is also an AUX setting which is not used, since the mixer section has separate line inputs)

Mute, volume and track navigation can be achieved via the media player control panel. Bluetooth pairing is always available for a single device so long as the device is within reception range. It may be necessary to re-connect if the device has moved out of range and disconnected.



In addition to the panel controls, an infra-red remote control is provided for the USB/SD player which adds some further functions to allow greater control over the media player.

To operate, remove the clear plastic tab from the remote to activate the battery.

## Charging the internal battery

When not in use but connected via the 12Vdc adapter to the mains, if the POWER switch is in the *off* position, the internal battery will be re-charged from the mains supply. This can be observed by the CHARGE LED which lights when charging

## Specifications

Power supply	110-240Vac, 50/60Hz, 12Vdc or internal battery
Battery life	Up to 8 hours
HF driver	2 x 25mmØ balanced dome
LF Driver	200mm (8") reinforced paper cone
Bluetooth version	2.1
Output power	50Wrms
SNR	85dB
Construction	Injection-moulded polypropylene
Power supply : Handheld transmitters	9Vdc (PP3 battery) each
Wireless microphone frequencies	174.1MHz + 175.0MHz
Dimensions	380 x 295 x 220mm
Weight	7.2kg

## Troubleshooting

No output and no LEDs lit	Check POWER switch is on
	Check battery is not drained fully
	Check mains lead is connected if not on battery power
Power LED lit but no VHF output	Check 9V batteries in handheld transmitters
	Check VHF POWER is switched on
	Check VOL controls are not turned down on top panel
	Check RF LED is lit for each channel (check transmitter frequency)
Bluetooth not connecting	Ensure that the smart phone or tablet is paired to "PA System"
	Check that the sending device is within range – usually 5 to 8m
Power LED lit but no media player output	Check USB or SD has compressed audio files stored
	Check USB or SD is connected properly
	Ensure media is formatted to the FAT32 file system
	Press MODE button and try Play/Pause button
	In FM tuner mode, ensure that a station is tuned in
	Check VOLUME is not turned down
	Press and hold "VOL +" button
Check LCD display to see moving numbers	
Power LED lit but no sound from external inputs	Check leads are OK and connected properly
	Check volume and on/off switch on external mic or line source
	Check VOLUME or MIC VOLUME control is not fully down
	In AUX mode, press Play/Pause to ensure input is not muted



**Disposal:** The "Crossed Wheelie Bin" symbol on the product means that the product is classed as Electrical or Electronic equipment and should not be disposed with other household or commercial waste at the end of its useful life. The goods must be disposed of according to your local council guidelines.

CE1622